

## Work History

### **SANTA'S BEST CRAFT, LTD.** - Trumbull, CT

Senior Graphic Designer, 2/2004 - 9/2011

*Manufacturer's representative for General Electric's seasonal merchandise. The largest national supplier of holiday lighting.*

- ◆ Responsible for developing General Electric's Christmas and seasonal lighting package layouts while exhibiting an eye for current design trends. Packaging includes a full line of light sets, pre-lit trees, indoor and outdoor figures & more.
- ◆ Apply strong background skills in corporate identity to create trade show materials and product line icons.

Clients include: Costco, Home Depot, Kmart, Lowes, Michaels, Sears, Walmart.

### **KZS/BRADY LEE** - Trumbull, CT

Art Director, 12/2000 - 07/2003

*Marketing and communications firm specializing in advertising and promotions.*

- ◆ Launched internal art department and maintained fluid workflow of projects without sacrificing deadlines or quality.
- ◆ A broad range of projects were embraced, including illustration, design of logos, print layouts, packaging, website layout and developing creative themes for sales meeting presentations.
- ◆ Coordinated brainstorming sessions, client presentations, photoshoots and determined need for freelance staffing.

Clients included: Acme United Corporation, ConnectiCare, Mount Gay Rum, NewMil Bank, Outdoor Sports Center, Piper-Heidsieck Champagne.

### **THE DOUG ELY DESIGN GROUP, INC.** - Fairfield, CT

04/1999 - 12/2000

Art Director, 04/2000 - 12/2000

Assistant Art Director, 04/1999 - 03/2000

*Marketing and corporate communications design firm serving local, regional and national accounts.*

- ◆ Worked with Creative Director to develop design concepts, layout and production of advertising, collateral and other print communications for a variety of business-to-business and consumer-focused clients.
- ◆ Required to generate sketched layouts and marker comps for Creative Director's approval before initializing computer layouts for client presentations.
- ◆ Managed assignments, which required art direction, design, production and close contact with printing representatives and clients.

Clients included: Bristol Babcock, Inc., Eureka! Tents, Iroquois Gas Transmission Systems, Philips Medical Systems, Ricoh, University of Bridgeport, vSimplify.

### **STARSTRUCK, INC.** - Bethel, CT

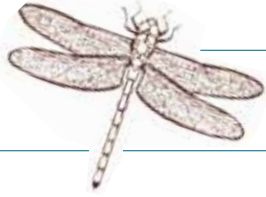
11/1996 - 04/1999

Assistant Art Director, 04/1998 - 04/1999

Graphic Designer, 11/1996 - 03/1998

*Catalog and Internet retailer of Major and Minor League merchandise and jewelers' supplies.*

- ◆ Worked closely with owner to maintain corporate image while retaining artistic and graphic creativity.
- ◆ Designed various catalogs and brochures, including theme implementation, color scheme, photographic artwork and typography.
- ◆ Completed promotional brochures, inserts, advertisements and direct mail pieces within tight budgets and deadlines.



## Work History, cont.

### CONNECTICUT MAGAZINE - Trumbull, CT

Production Assistant, 06/1994 - 11/1996

*Regional lifestyle magazine.*

- ◆ Created advertisements. These responsibilities included coordinating work flow, working within deadlines, selecting artwork, scanning images and working closely with the Production Manager and advertising clients.
- ◆ Mechanical paste-up of advertisements and editorial columns throughout magazine.

### FREELANCE DESIGNER, 06/1997 to present:

- ◆ Rutledge Books, Inc.: Develop jacket cover designs, promotional materials and book galleys for a variety of novels.
- ◆ Barber On Main, Christine Collin Interior Design, Dragone Classic Motorcars, Fine Lines Corporate Auto Spa, Flip Salon & Boutique, Hawaiian Tropics/Banana Boat, Healthy Choice Mattresses, Piccirillo Landscaping, Sharon Kagabines Voice Talent, Skinny Pines Brick Oven Catering, Solotel Systems, Tri-State Underdecking, Ty Andrew music: Create logo design, accompanying stationery and promotional concepts focusing on exceeding clients' expectations to communicate with their target audiences.
- ◆ Chips Family Restaurant: Develop mascot targeting children to promote their large variety of pancakes.

### THEATRICAL VOLUNTEER, 1990 - 1994:

- ◆ Square One Theatre Company - Stratford, CT: Positions included Stage Manager, Prop Stage Hand and Lighting Technician.

## Education

NOBLE DESKTOP, LLC. - New York, NY

Macromedia Flash MX, 2004

CREATIVE ARTS WORKSHOP - New Haven, CT

Painting, Printmaking, 2001 to 2003

SOUTHERN CONNECTICUT STATE UNIVERSITY - New Haven, CT

Studio Art Major with Graphic Design Concentration/Theater Arts Minor, 1995

## Affiliations

Connecticut Art Directors Club (CADC)

2000 to 2005

American Institute of Graphic Arts (AIGA)

New York Chapter, 1997 to 1999

## Technical Skills

Macintosh OS X

Flash MX

QuarkXPress

Adobe Acrobat

Adobe Illustrator

Adobe InDesign

Adobe Photoshop

Microsoft PowerPoint

Microsoft Word

Illustration

Printmaking